

**Medtronic**  
Engineering the extraordinary

# EleVision™ 4k System



Your clear visualization choice.

To be a true visionary,  
you need true vision.

# Focus on what matters. See what's possible.

In the OR, essential visualization can suddenly change. Fogged lenses, poor illumination, and unnatural colors make it tricky to identify critical structures or separate tissue layers. By changing the way you look at things, it's possible to see them as they actually are.



Introducing the EleVision™ 4K System  
the latest evolution in the Medtronic  
visualization system portfolio.

The EleVision™ 4K System  
provides crisp, vibrant color resolution and a clear  
image that shows what you need to see.



Selective color enhancement (SCE) algorithm  
may improve identification and characterization  
of critical structures

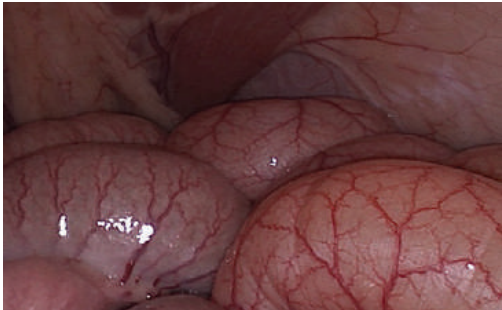


Smoke reduction algorithm may improve  
visualization by digitally removing smoke  
from the image

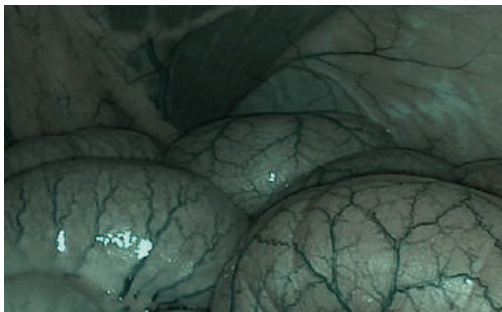


# To truly see, image quality is key

EleVision™ 4k System



The platform allows you to see natural colors on your display. It can help surgeons distinguish subtle differences in color tones.



The edge enhancement mode may aid in the visual assessment of anatomical structures. And a precision-enhancing optical zoom feature provides a full-screen image with no loss of image quality.



When it comes to image quality, the EleVision 4K platform delivers streamlined visualization that enables smooth and efficient procedures from start to finish.

# CLEAR VISION MAKES ALL THE DIFFERENCE.

## EleVision™ 4K system



### MONITOR

4K/UHD resolution  
(3840 x 2160p)

### 50 L INSUFFLATOR

Offers gas heating to target a  
37°C body temperature

### CAMERA

- Auto light control
- Optical zoom: full screen image without loss of image quality
- Video recording
- Selective color enhancement and smoke reduction
- Advanced views (color shift one and two)
- Fine structural enhancement modes
- Picture on picture
- 10 user presets

### 4K LAPAROSCOPES

### LED LIGHT SOURCE

LED300 has a 30,000 hour  
lifespan



تهران جراح نوین

(۰۲۱)۷۵۹۱۷

[www.tjn-eng.com](http://www.tjn-eng.com)

**Medtronic**

Engineering the extraordinary